



VEHICLE OVERVIEW

MARTIN JOSE DEL CASTILLO S.

MARCH 2, 2019

MX480 MODEL CRANE TRUCK

Built for maneuvering heavy loads.

Confidently lift and haul heavy loads of up to 2,000 lbs. The multi-purpose MX-480 Boom Crane is more efficient than a chain block and can access tight spaces other lift systems cannot, thanks to its compact design, 150" turning radius and extendable, rear-facing boom crane. Standard features include four hydraulic outriggers for worry-free stability, a high-efficiency AC powertrain and controller, direct drive differential and large drum brakes. A sturdy, easy-to-operate vehicle with excellent maneuverability, traction and braking—even when hauling heavy loads.



Custom Vehicles, Utility Vehicles

Other Models :

 PASSENGERS
2

 LOAD CAPACITY
2,000 lbs

 TOWING CAPACITY
6,000 lbs

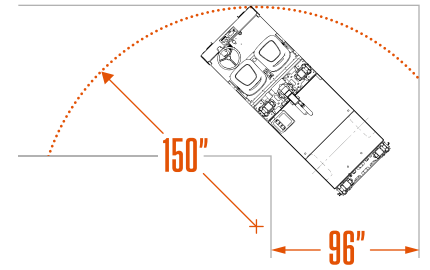
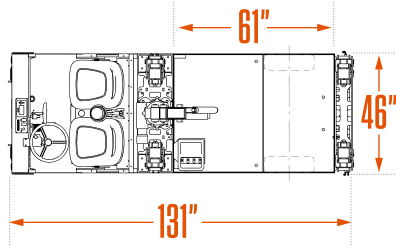
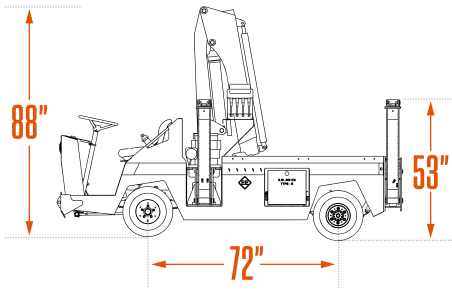
 SPEED MPH
10 mph

 TURNING RADIUS
150"



FEATURES

- Fully hydraulic, extendable, rear-facing boom crane
- High-efficiency asynchronous AC / Direct Drive motor
- Time-saving roll-out battery compartment
- Four hydraulic outriggers for stable hoisting
- Safe and comfortable all-steel cab (Optional)



Dimensions

VEHICLE

Height	88"	2,235 mm
Length	130.5"	3,315 mm
Width	47.5"	1,207 mm
Wheel Base	72"	1,829 mm
Ground Clearance	6"	152 mm

DECK

Height	31"	787 mm
Width	45"	1,143 mm
Length	59.5"	1,511 mm

UNIT WEIGHT

With Batteries	n/a	n/a
Without Batteries	2,200 lbs	998 kg

BATTERIES

Height	n/a	n/a
Length	n/a	n/a
Width	n/a	n/a
Weight - Min	n/a	n/a
Weight - Max	n/a	n/a

Performances

VEHICLE

Passengers	2	
Load Capacity	2,000 lbs	907 kg
Tow Capacity	6,000 lbs	2,722 kg
Drawbar Pull - Normal	350 lbs	1,557 N
Drawbar Pull - Ultimate	1,050 lbs	4,671 N
Speed MPH	10 mph	16 km/h
Turning Radius	150"	3,810 mm

Vehicle shown may have optional accessories and is provided for illustrative purposes only. Specifications and standard equipment are subject to change without notice.

Specifications

POWERTRAIN

Motor	15 HP brushless AC motor
Controller	AC Electronic speed controller
Drive Axle	Helical gear differential
Brakes	Rear hydraulic drum brakes, electromagnetic parking brake with manual hand release, regenerative braking
Wheels	5.7x8 LRD pneumatic tires
Transmission	Direct drive
Suspension	Dual leaf springs on front and rear
Starter	n/a
Clutch	n/a
Engine	n/a

ENERGY

Voltage	48 Volt
Battery	Eight 6V-225AH batteries
Charger	High-frequency (85-265VAC / 45-65Hz, 1kw), built-in and automatic.
Alternator	n/a
Fuel	n/a

CHASSIS

Body	All-steel unibody construction. Powder Coating.
Color	Security orange or federal yellow
Lights	LED dual headlights & tail/brake lights

OPERATOR COMPARTMENT

Steering	Automotive steering wheel
Seats	Two bucket seats on slide adjusters
Indicators	Multifunction display including speedometer, battery state of charge, hour meter, odometer and fault warnings. Password-protected parameters and monitoring capability.
Safety	Deadman seat switch, reverse alarm, horn
Accessories	Bolt-on front bumper, DC/DC converter to equalize battery cells

Standards

Vehicle: Conforms to UL 558 and ANSI B56.8. | Crane: Complies with ANSI B 30.5, DIN 15018 and EN12999 Standard



POPULAR OPTIONS

GET THE IDEAL VEHICLE FOR THE JOB.

With unlimited configurations, we make customization quick, easy and affordable.

Batteries & Chargers

480-001 251 Ah batteries to replace eight batteries

Cabs & Top Covers

360-041 Steel cab and doors, wiper, rearview mirror

Lights

302-025K Headlights on key switch

Performances

330-033 Factory programmed to 6 mph max. speed

Safety Features

360-026BSL02 Blue safety light on front cowl
360-026 Pole mounted strobe light

Seats

360-049 Seat belts, retractable, two passengers

Suspensions

320-039 Dual shock absorbers on front
320-039R Dual shock absorbers on rear

Wheels

360-077 500 x 8 solid soft rubber wheels

The list above shows the most popular options for this vehicle. More options are available. To learn more about the MX - 480 - Crane Truck options, please contact your representative. Options, specifications and standard equipment are subject to change without notice.



Martin Jose Del Castillo S.
President

+52 662 210-7808 #104
mj.delcastillo@mmh.com.mx

Mex Material Handling
Los Mayos 13, Parque Industrial
Hermosillo (Sonora)
83299
Mexico



www.motrec.com